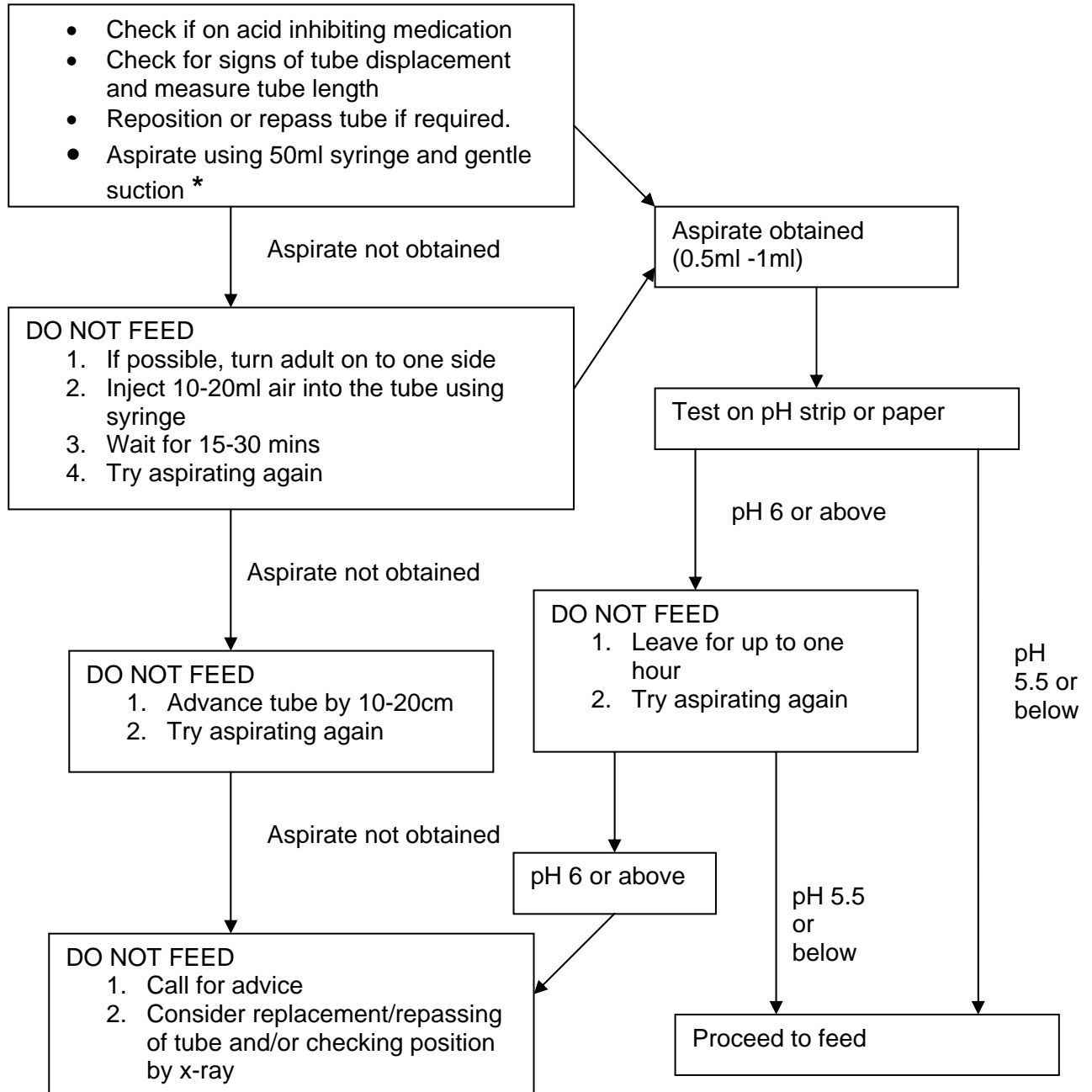


Confirming the correct position of Nasogastric Tubes in adults

Taken from NPSA Alert 05



CAUTION: If there is ANY query about position and/or the clarity of the colour change on pH strip, particularly between ranges 5 and 6, then feeding should not commence.

* If there is too much back pressure when aspirating using a 50ml syringe, try using a smaller syringe to aspirate.